

# Gann Historical Society Research – Phase 2

## Introduction

### *Provided by the Society*

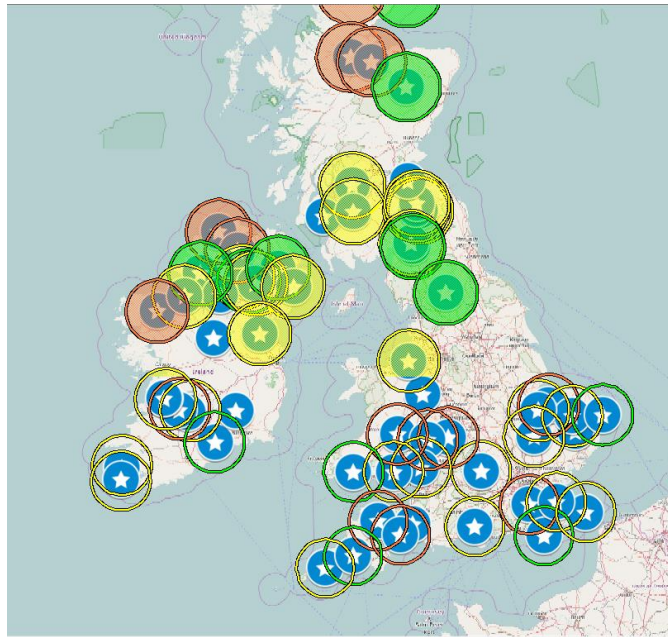
Previous Society research indicates that the Ganns come from a proto-Germanic tribe that originated in the area around the North Sea.

### *From Phase 1*

Based on heatmap concentration and surnames found in the Phase 1 data, it appears that the Gann surname is a variation of Scotch-Irish surnames found across Northern Ireland and the Scottish Lowlands roughly 1000 years ago.

### Goal of Phase 2

The second phase of the research will attempt to determine the more distant origins, Norman or otherwise. The results of the first phase will be used as the basis of this phase. It will include: when did the Gann ancestors arrive in the British Isles, did they arrive with a historic group and what is their European origin dating over 2,000 years?



## Analysis

Using the Gann modal haplotype as a basis, an additional 100 genetic cousins were identified from Europe. These kits (provided in the appendix) were selected for close genetic relationship and metadata including *most distant known paternal ancestor* (MDKPA) locations.

A phylogenetic tree (Fig 1.) was constructed using kits from both phases of research. The tree represents a graphical genetic relationship between all kits and forms a trunk from which the Gann branch is one of many. Nodes that represent common ancestors are located where the branches on the phylogenetic tree meet.

The genetic cousin ancestral locations were plotted on a map (Fig 2.). Data from the tree was used to determine the location of each common ancestor node. Linking the ancestor nodes provides a migration pattern.

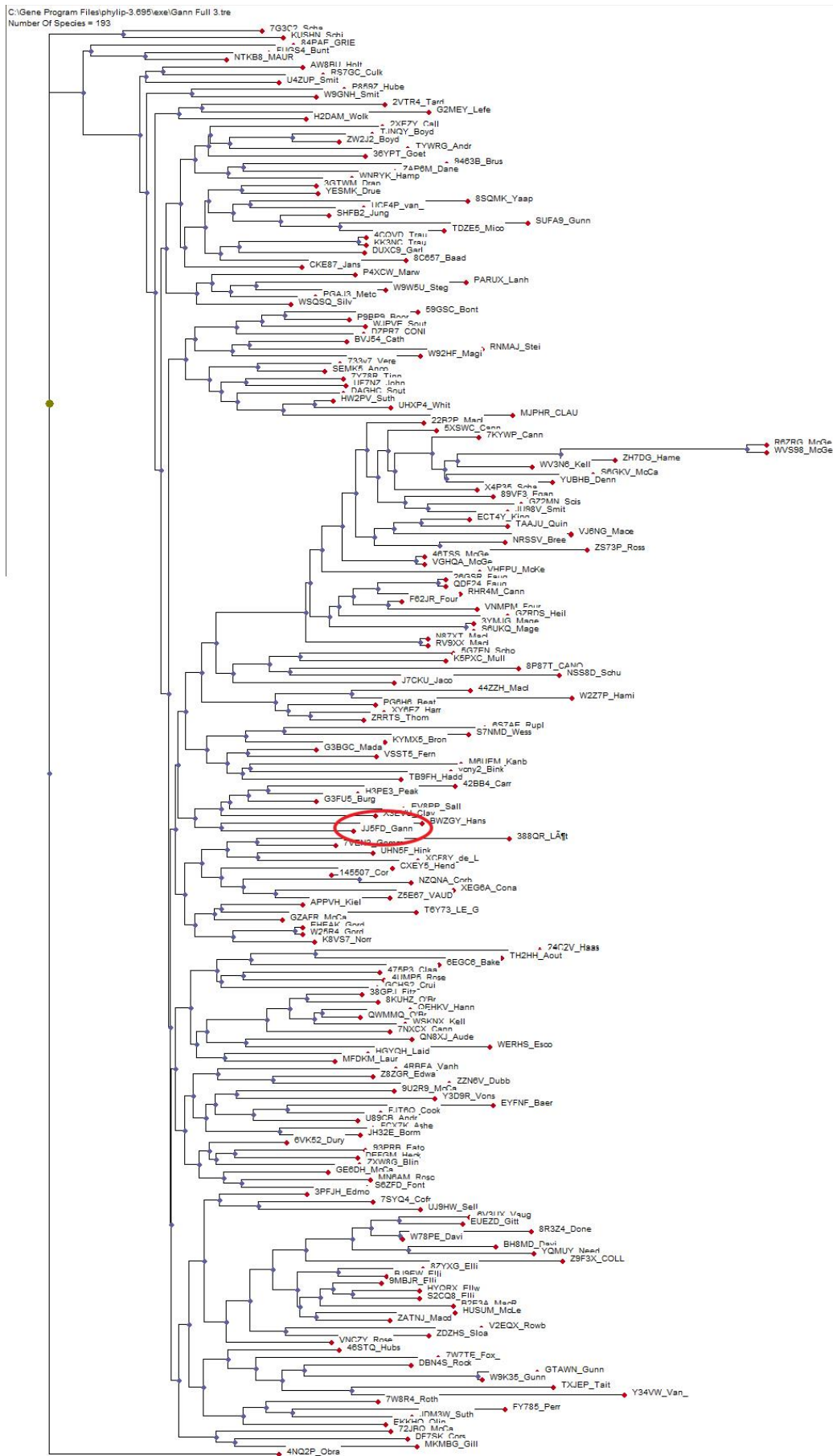
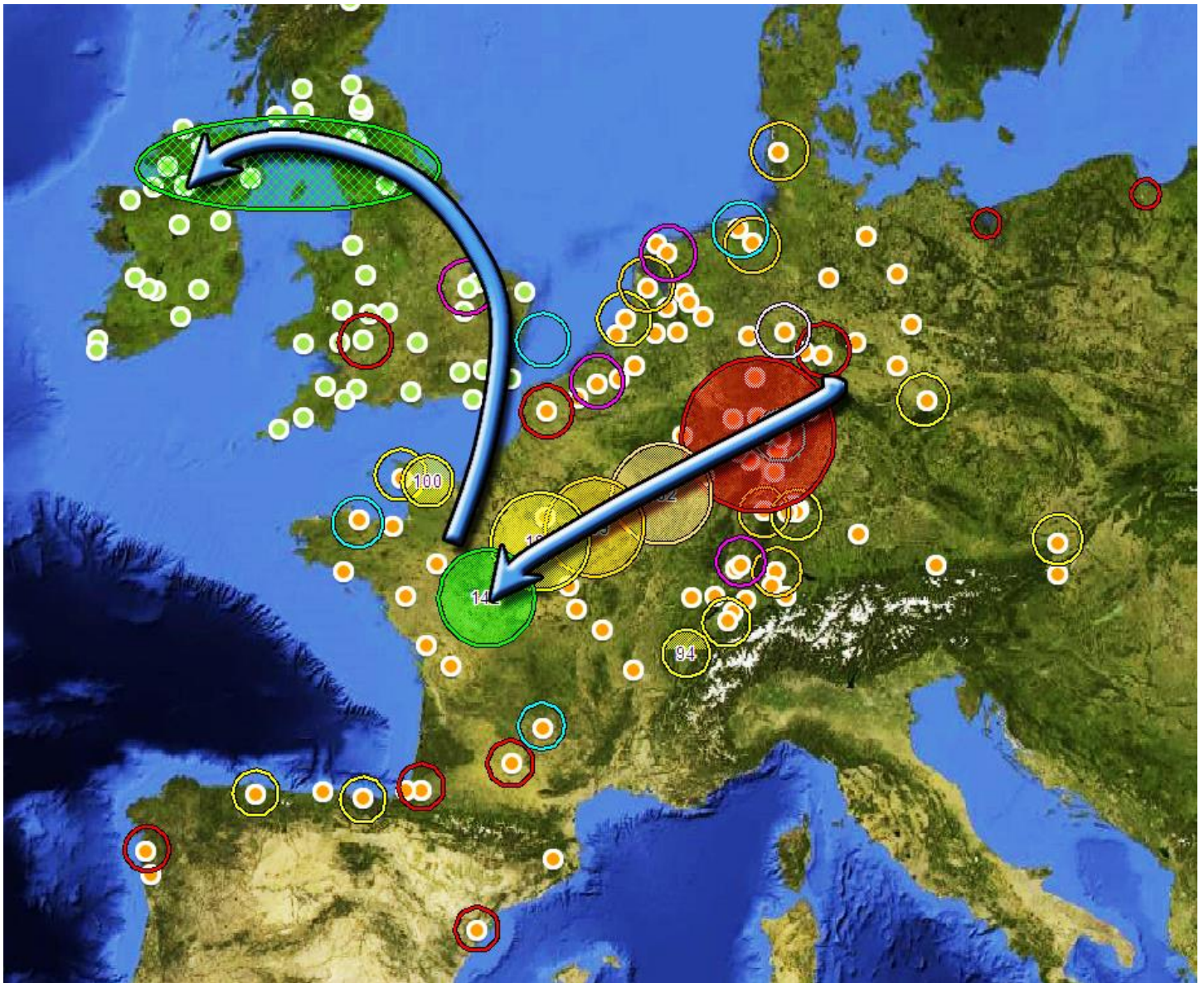


Figure 1 – Phylogenetic Tree



The oldest ancestor nodes generated from the data form a backbone or trunk that stretches from central Germany through central France. This backbone migration began roughly 2000 years ago, until about 1000 years ago. This is a smooth and continuous migration pattern. Then about 1000 years ago, there is a jump to Britain for the Gann specific branch. This jump indicates a relocation, or more likely, an invasion.



**Figure 2 – Gann Genetic Migration Map**

The timing corresponds to the Norman invasion of Britain (1066). The last projected genetic location for the Gann line also corresponds with Norman-held land in France. Anecdotal data from Phase 1 corroborates these theories. The Corbetts are a close genetic match from Northern Ireland and have Norman origins. The McGanns of Northern Ireland gained power after the Normans increased control over Ireland (abt 1172).

While the data indicates that the Gann line entered Britain with the Normans, the data also indicates that the Gann line wasn't of Norman descent. Historically, the Normans assimilated heavily with Frankish people, an earlier barbarian tribe that created an empire spanning parts of modern-day Germany and France. The Gann family genetic backbone appears to be a good match to that migration of Frankish peoples from Germany into France.

I am confident that the Gann line was part of the Frankish empire, but I can't say with any certainty that they were part of the core Frankish genetic identity. The core Frankish identity is made up of two older tribes, the Ripuari and Salii. Genetically, the core may also be represented by Charlemagne and his extended family. A group like the Franks would

not have been homogenous genetically. The empire would have grown by absorbing smaller tribes. Assimilated tribes include the Alemanni, Bavari and Thuringi. In time, we may be able to identify each tribe through DNA.

#### Reference:

Getting More from Your Genetic Testing Results: Y-DNA Mapping (2014) -  
<http://originhunters.blogspot.com/2014/01/getting-more-from-your-genetic-testing.html>

#### Appendix:

Ysearch	Surname	Location
6VK52	Duryee	Mannheim, Netherlands
2VTR4	Tardif	Étables-sur-Mer, France
36YPT	Goetzman	Gaggenau, Baden-Württemberg, Germany
42BB4	Carrera	Vigo, Spain
46STQ	Hubschmid	Madiswil BE, Switzerland
475P3	Claar	Bern/Berne, Switzerland
4CQVD	Trautwein	Markgroeningen, Germany
4RBEA	Vanhorn	Hooren, Zuyder Zee, Friesland, Netherlands
4UMP5	Rose	Espalhafatos, Ribeirinha, Faial, Portugal
59GSC	Bontekoe	Berlikum, Netherlands
72JBQ	McCall	Yecla, Spain
733v7	Verelst	Schelle, Belgium
7SYQ4	CofrÃ©	Sevilla, Spain
7VEN3	Gommes	Weiswampach, Luxembourg
7W8R4	Rothey	Darmstadt, Hesse-Darmstadt/Hessen-Darmstadt, Germany
8C657	Baade	Dreilutzow, Mecklenburg-Schwerin, Germany
9463B	Brusca	Ulldecona (Catalonia), Spain
AW8BU	Holt	Vienna, Austria
BVJ54	Cath	Lippe-Detmold, Germany
BWZGY	Hansen	Göttingen, Germany
CKE87	Jansen	Rijkevorsel, Belgium
CXEY5	Hendriksen	Harderwijk, Netherlands
DAGHC	South East Drenthe	Hesselte, Netherlands
DEFGM	Heckman	Merchingen, Mosbach, Baden, Germany
DF7SK	Corsi	La Cavada, Santander, Spain
DUXC9	Garlough	Heddesdorf, Rheinland-Pfalz/Rhineland-Palatinate, Germany
DZPR7	CONINE	Ghent, Holland
EKKHQ	Olinger	Heddesheim, Bad Kreuznach, Germany
EV8PP	Sallaberry	Bldache, France
FCX7K	Ashenfelter	Kriegsfeld, Germany
FJT6Q	Cook	Deisel, Hesse-Kassel, Germany
FY785	Perrault	Cosne-sur-Loire, France
G3BGC	Madalengoitia	Rigoitia, Spain
G3FU5	Burguieres	Montauban, Tarn-et-Garonne, France

H2DAM	Wolken	Esens, Ostfriesland, Germany
HGYQH	Laidacker	Eckweiler, Rheinland-Pfalz/Rhineland-Palatinate, Germany
J7CKU	Jacoutot	Doubs, France, Strasbourg, France
JH32E	Borman	Holtrup, Germany
KK3NC	Trautwein	Markgroeningen, Germany
KYMX5	Bron	noorderdrachten, Netherlands
MFDKM	Laurendeau	TerÃ§Ã©- Poitou, France
MN6AM	Roscoe	Chateau Gontier, France
P4XCW	Marwede	Hermannsburg, Germany
P859Z	Huber	either Landau or Petit Landau, Alsace-Lorraine/Elsass-Lothringen, France
P9BP9	Boortz	Wangerin, Kreis Regenwalde, Prussia, Pomerania/Pommern, Germany
QN8XJ	Audette	Poitou-Charentes, France
S6ZFD	Font	Sant Miquel de Pineda, Spain
S7NMD	Wessels	zetel, Germany
SHFB2	Jung	Rod an der Weil, Hessen, Germany, Germany
T6Y73	LE GALL	Plouhinec, France
TYWRG	Andrewsen	Rodenäs, Schleswig-Holstein, Germany
U89CB	Andres	Obertiefenbach (Beselich), Germany
UCF4P	van Bronswijk	Huissen, Netherlands
VNCZY	Rosenbaum	Colbach, Germany
VSST5	Fernandez Carbajal	Celles, Pola de Siero, Asturias, Spain
W92HF	Maginel	Dommartin, Alsace-Lorraine/Elsass-Lothringen, France
W9W5U	Steg	Salzburg, Austria
Y3D9R	Vons	Schmiden, Württemberg/Wurttemberg, Germany
YESMK	Drueke	Elspe, Lennestadt, Nordrhein-Westfalen/North Rhine- Westphalia, Germany
Z5E67	VAUDELIN	Chalmoux, France
ZAP6M	Danel	Pas de Calais, France
24C2V	Haas	Buren, Netherlands
388QR	LÄ¶tter	Augsburg, Württemberg/Wurttemberg, Germany
4NQ2P	Obrador	Felanitx, Spain
5G7EN	Scholz	Oberprausnitz, Sudetenland, Austria
6S7AE	Rupley	Dachsen, Laufen-Uhwiesen, Zurich, Switzerland
7G3C2	Schalla	Lamenstein, West Prussia/Westpreußen, Germany
7W7TE	Fox	Eckweiler, Rheinland-Pfalz/Rhineland-Palatinate, Germany
84PAE	GRIEPENTROG	Seifersdorf, Sachsen (Provinz)/ Saxony (Prussian Province), Germany
8P87T	CANOVAS- CHAMPAGNE	Longjumeau, France
8SQMK	Yaap	Legde, Germany
CXEY5	Hendriksen	Harderwijk, Netherlands
DBN4S	Rock	Nevers, France
EYFNF	Baerenwald	Medewitz, Pomerania/Pommern, Germany
F62JR	Fournier	St. Eteinne de Marans, LaRocheII, France, France
FUGS4	Buntzler	Stuttgart, Germany
G2MEY	Lefever	Lauwe, West-Vlaanderen, Belgium

GZRDS	Heiland	Steibnbach/Offenbach, Hesse/Hessen, Germany
J7CKU	Jacoutot	Doubs, France, Strasbourg, France
JU98V	Smit	Hengevelde, Netherlands
K5PXC	Mull	Merseburg, Sachsen (Provinz)/Saxony (Prussian Province), Germany
KUSHN	Schirrmeister	Altdamm, Pomerania/Pommern, Germany
M6UEM	Kanbier	Leiden, Netherlands
MJPHR	CLAUDE	noirmont, Jura, Switzerland
MKMBG	Gillhofer	Muehlviertel,Oberneukirchen,Waxenberg, Austria
NSS8D	Schunemann	Rubeland, Germany
NTKB8	MAURICE	FIERVILLE-LES-MINES(France), France
RNMAJ	Steiger	Eschenbach SG, Switzerland
TH2HH	Aoutin	Miniac-Morvan, France
VNMPM	Fournier	Marans, France
WERHS	Escobar	biarritz, France
X4P35	Schaber	Rennigen, Württemberg/Wurttemberg, Germany
XCF8Y	de Lima	Ponte de Lima, Portugal
Y34VW	Van Aalderen	Heino, Netherlands
ycny2	Binkley	Guggisberg, Kanton Bern, Switzerland
ZH7DG	Hamelin	Normandy, France
ZZN6V	Dubbs	Affoltern, Switzerland, Switzerland